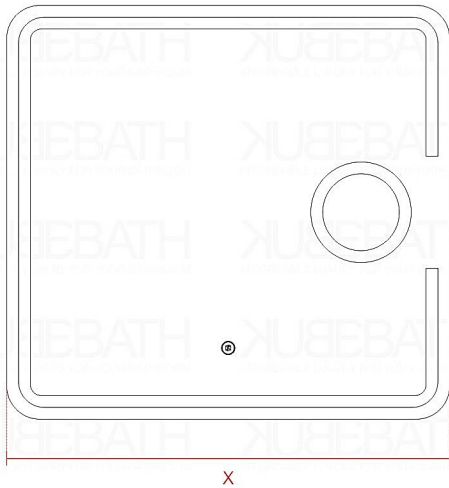
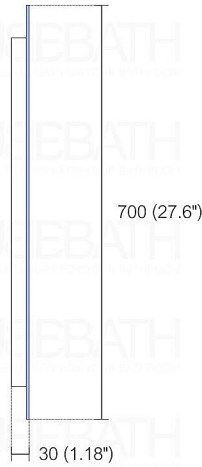


The **Kube Magno** LED Mirror features a sensor on/off switch and a 8x magnifying mirror, that is great for shaving and makeup. All KubeBath LED mirrors are made with the highest quality components. The LED strips have an average lifetime of 50,000 hours, making them almost maintenance free.

FRONT VIEW



SIDE VIEW



TOP VIEW

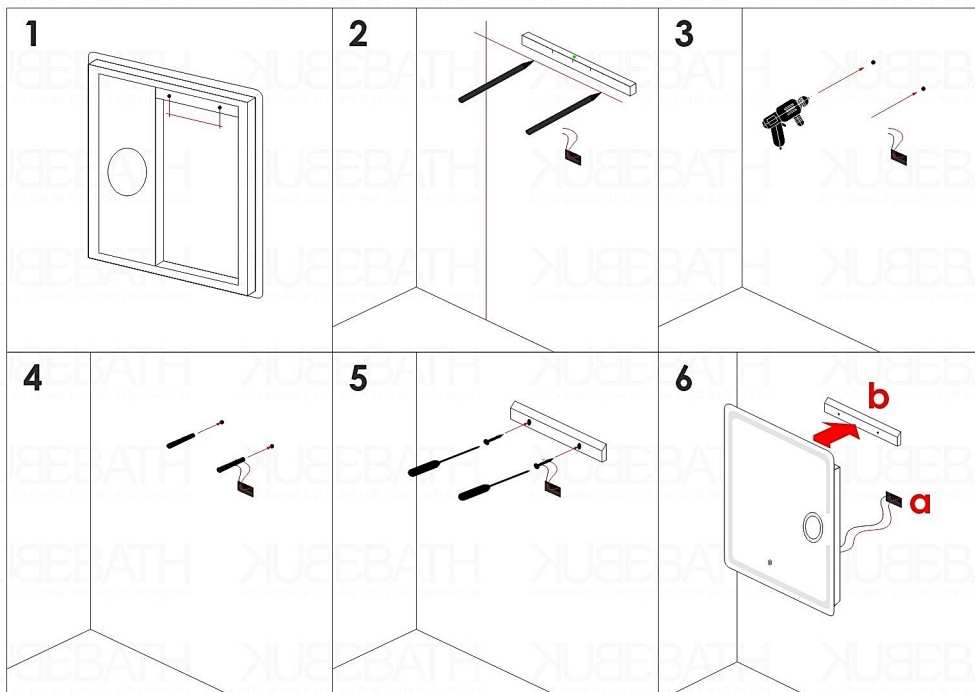


Support wood bar

SKU	Width x Depth x Height
	Inches
KMLED30	29.5 x 1.18 x 27.6
KMLED36	35.4 x 1.18 x 27.6
KMLED40	39.4 x 1.18 x 27.6
KMLED48	47.2 x 1.18 x 27.6

SKU	Width x Depth x Height
	mm
KMLED30	750 x 30 x 700
KMLED36	900 x 30 x 700
KMLED40	1000 x 30 x 700
KMLED48	1200 x 30 x 700

NOTE: DIMENSIONS AND TECHNICAL DETAILS ARE SUBJECT TO CHANGE WITHOUT NOTICE



REMOVE THE COVER AND CONNECT TO THE POWER SUPPLY



The LED Driver inside the enclosed Icon mirror has already converted the electric to 110 volts. You can connect the wires that are coming out of the center of the back of the mirror directly to your electrical connection box. The Icon wires get connected to your 110 Volt electric box that you should have placed in the wall, behind where your Icon Mirror will be mounted. It doesn't have to be exactly in the center as the lead wire gives you flexibility in the placement. However we suggest you place it somewhere towards the center.